

# SW

PLEIN AIRCON

TROUBLE SHOOTING

04/05/2021



# SW

## Index

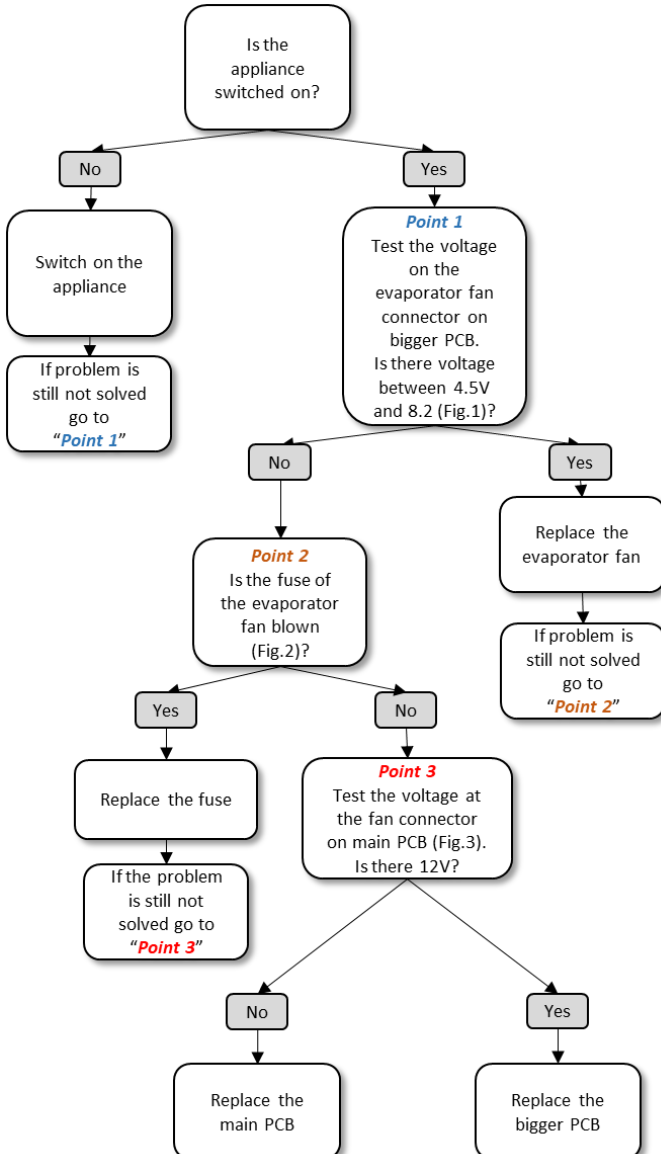
LIST OF NECESSARY TOOLS _____	3
AIR DOES NOT FLOWS BUT APPLIANCE SWITCH ON/ EVAPORATOR FAN DOES NOT WORK _____	4
THE AIR FLOW IS NEVER COLD/ THE CONDITIONER DOES NOT COOL _____	5
COMPRESSOR AND FANS DO NOT WORK _____	6
THE AIR CONDITIONER DOES NOT COOL ENOUGH _____	7
PICTURES _____	8
HOW TO REPLACE THE ANTI-ICING TEMPERATURE SENSOR ____	11
HOW TO REPLACE THE BIGGER PCB _____	12
HOW TO REPLACE THE COMPRESSOR PCB _____	14
HOW TO REPLACE THE CONDENSER FAN _____	15
HOW TO REPLACE THE CONVERTER _____	17
HOW TO CLEAN THE DUST FILTER _____	19
HOW TO REPLACE THE EVAPORATOR FAN _____	20
HOW TO REPLACE THE INFRARED RECEIVER _____	21
HOW TO REPLACE THE MAIN PCB _____	22
HOW TO REPLACE THE EVAPORATOR TEMPERATURE SENSOR _	23

## LIST OF NECESSARY TOOLS

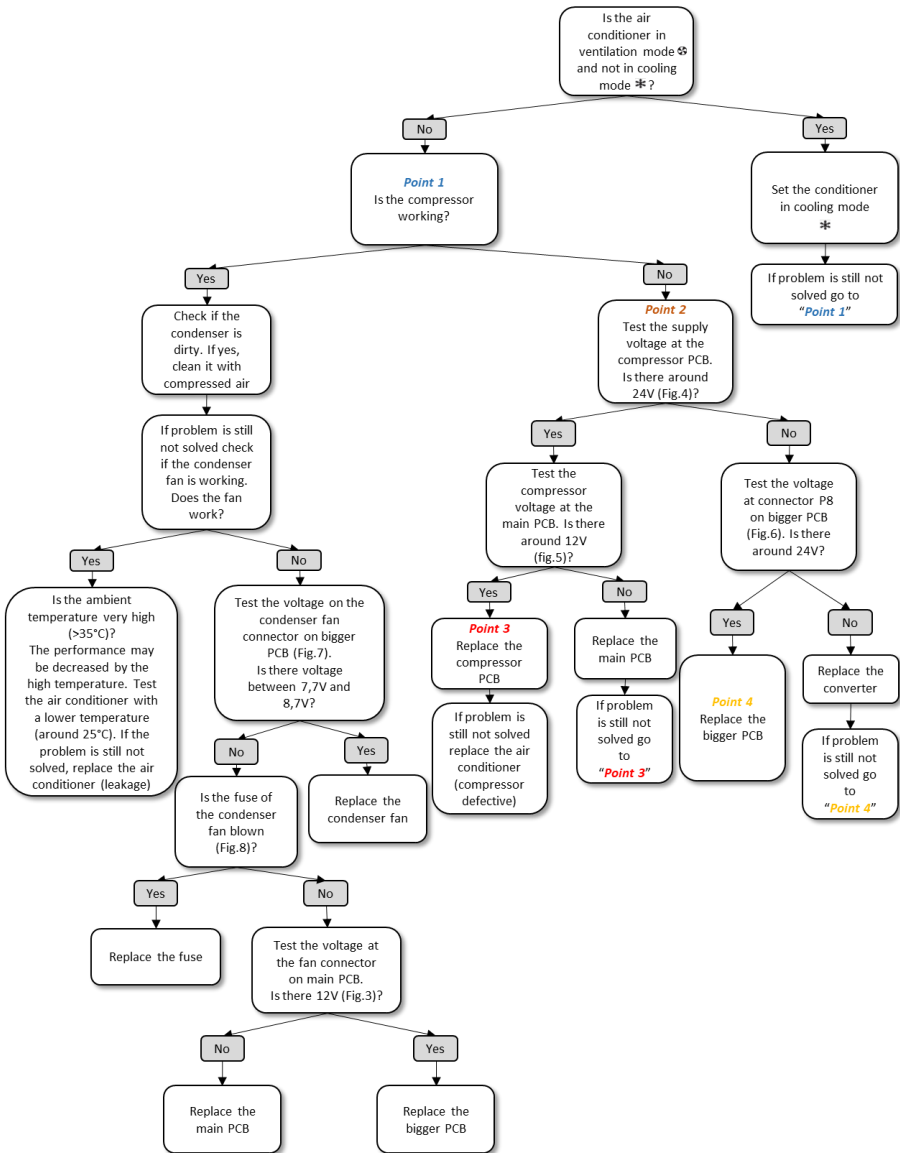
Before starting any analysis activity or any replacement of defective components, be sure to have the followings tools:

- Adjustable power supply;
- Voltage Tester;
- Phillips head screwdrivers;
- Wire to make bridge within 2 connectors;
- Wire Cutter/scissors;
- Torx screwdriver;

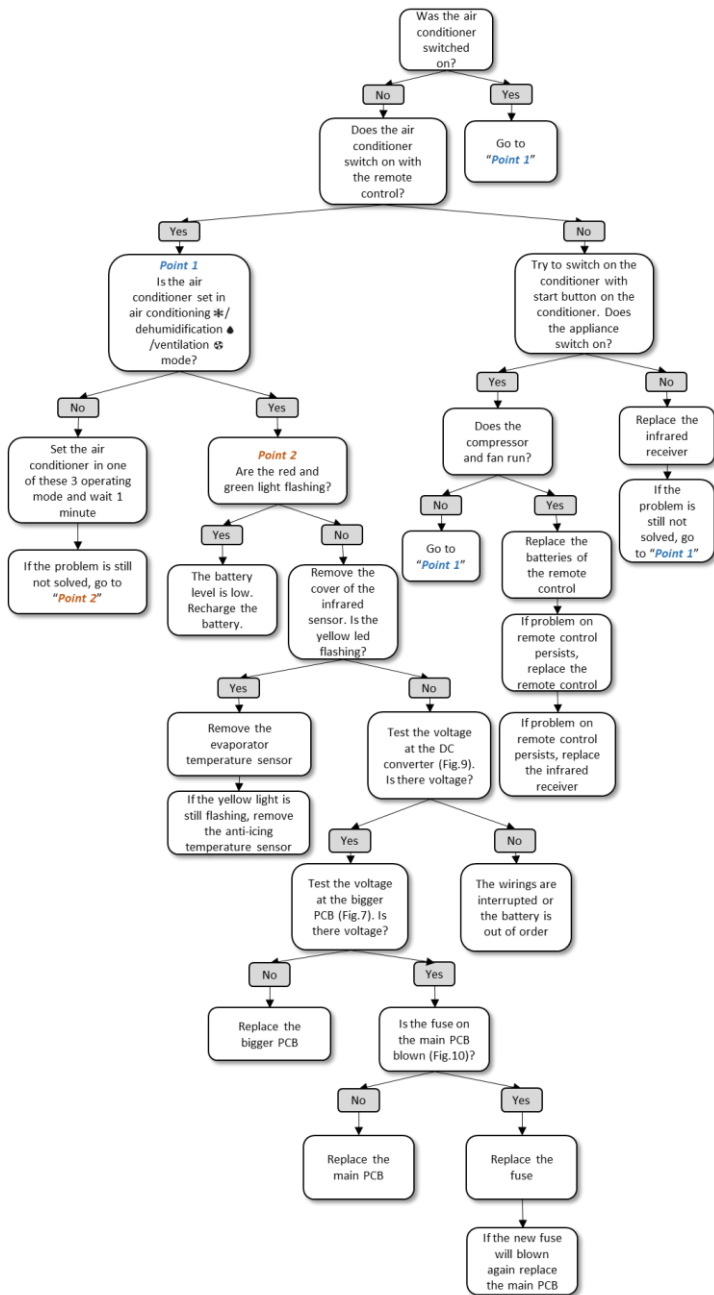
# AIR DOES NOT FLOW BUT APPLIANCE SWITCH ON/ EVAPORATOR FAN DOES NOT WORK



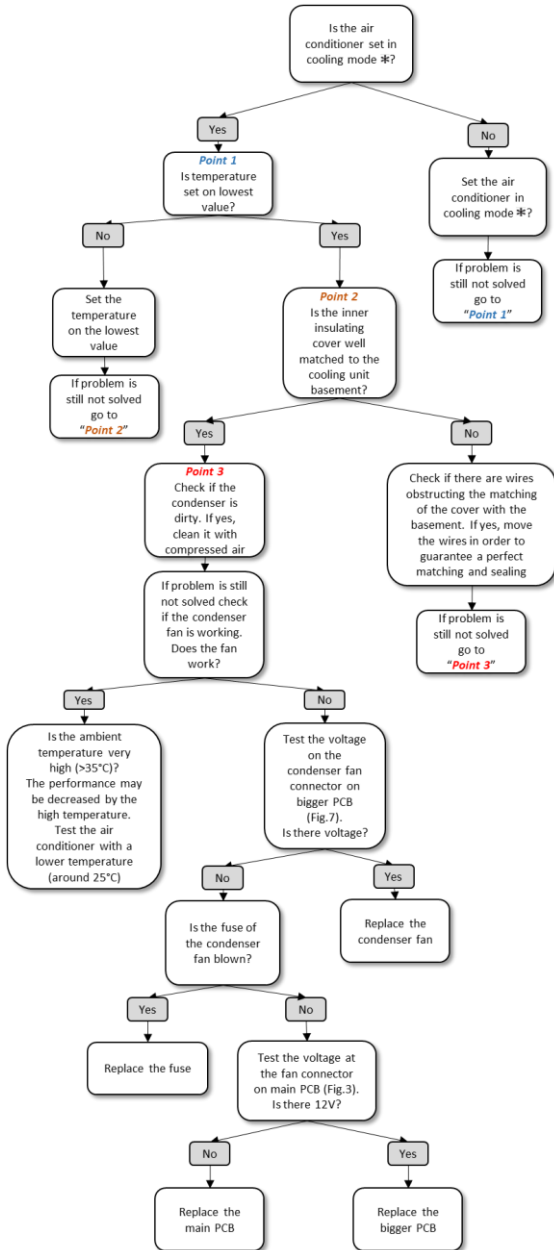
# THE AIR FLOW IS NEVER COLD/ THE CONDITIONER DOES NOT COOL



# COMPRESSOR AND FANS DO NOT WORK



# THE AIR CONDITIONER DOES NOT COOL ENOUGH



# PICTURES



Fig.1

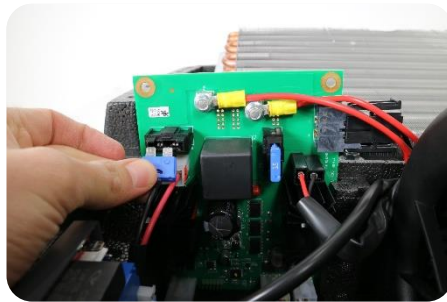


Fig.2

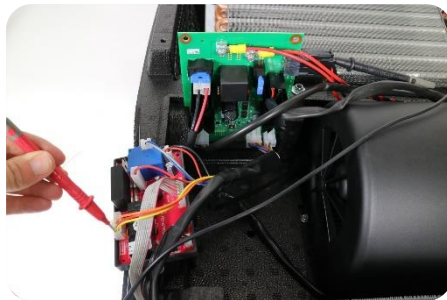


Fig.3 Please test the positive terminal as following:

- Yellow wire: evaporator fan set on L
- Red wire: evaporator fan set on M
- Orange wire: evaporator fan set on H



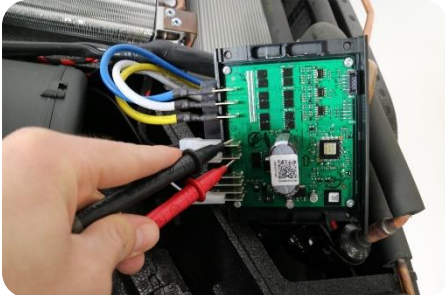


Fig.4

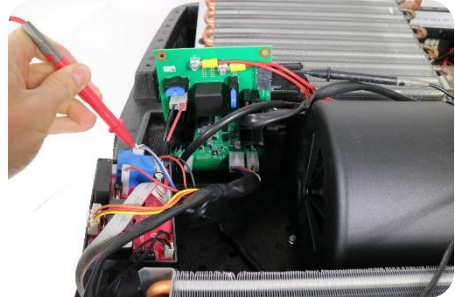


Fig.5

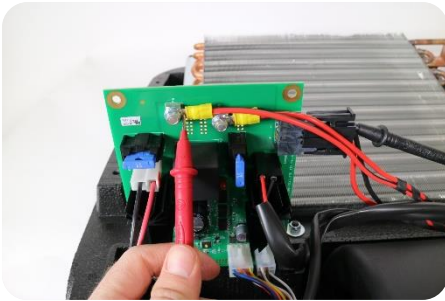


Fig.6

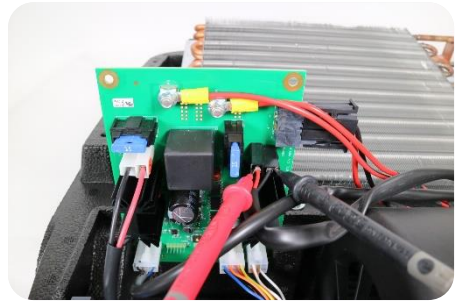


Fig.7

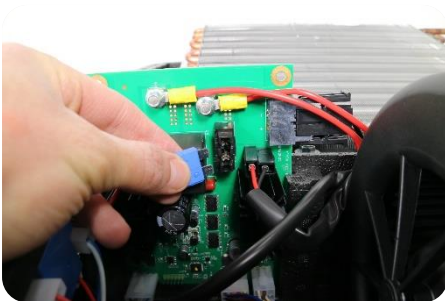


Fig.8

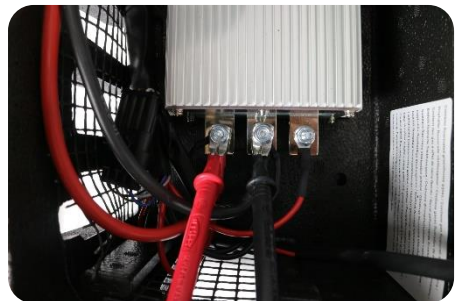


Fig.9

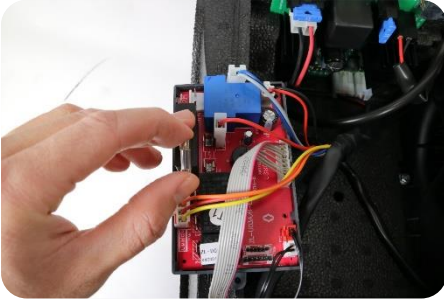


Fig.10

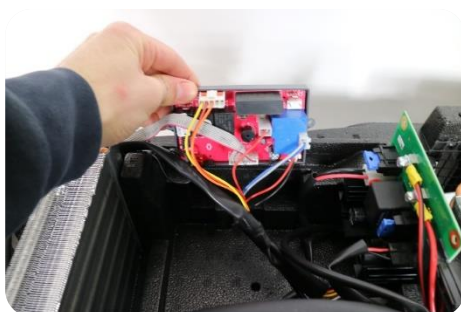
# HOW TO REPLACE THE ANTI-ICING TEMPERATURE SENSOR



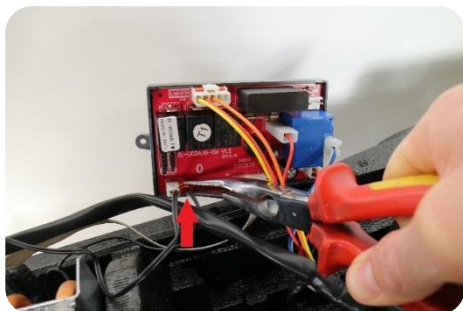
1) Unscrew the roof cover (5 screws)



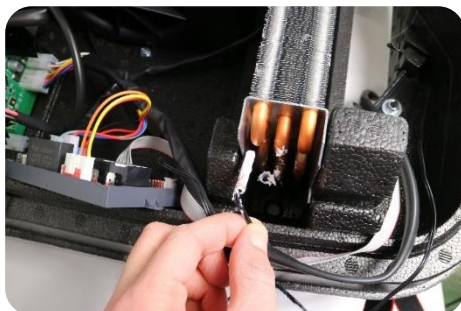
2) Remove the inner cover



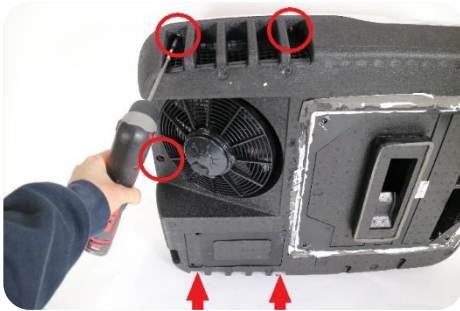
3) Slide out the main PCB



4) Disconnect the RT2 red connector from the PCB and then remove the anti-icing temperature sensor



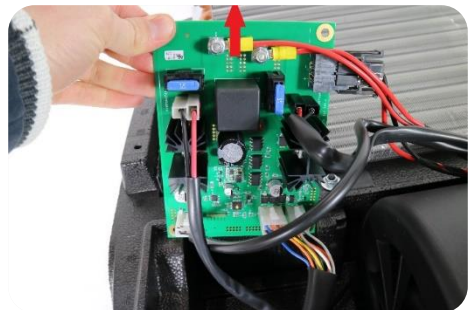
# HOW TO REPLACE THE BIGGER PCB



1) Unscrew the roof cover (5 screws)



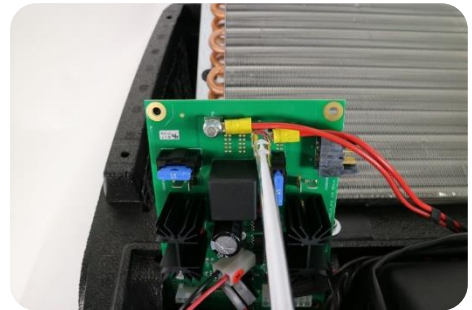
2) Remove the inner cover



3) Slide out the PCB



4) Disconnect all the connectors from the PCB

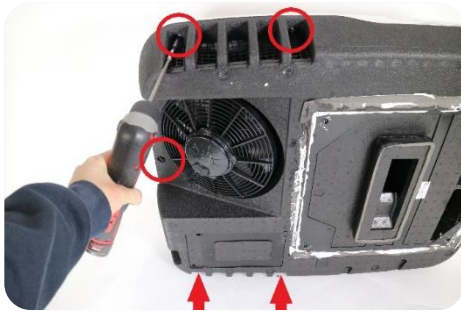


5) Unscrew the two compressor wire (2 nut-screw)



6) Remove the 2 fuse and replace the PCB with a new one

# HOW TO REPLACE THE COMPRESSOR PCB



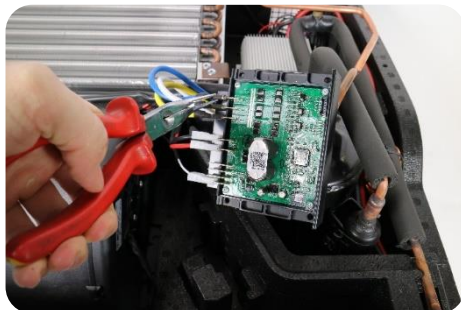
1) Unscrew the roof cover (5 screws)



2) Remove the inner cover



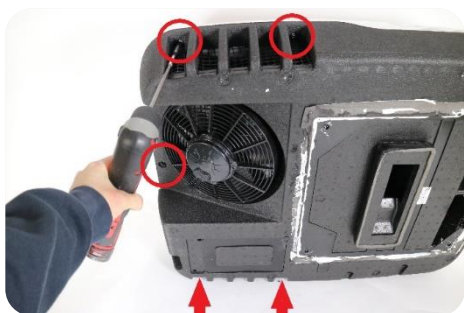
3) Slide out the main PCB



4) Disconnect all the wires from the PCB connectors and then remove the PCB with a new one



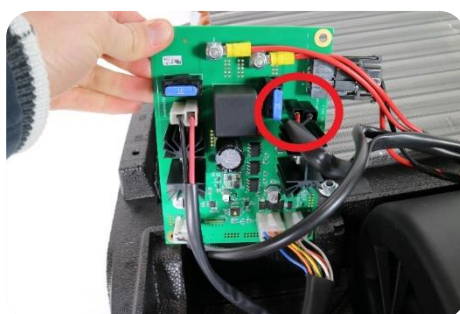
# HOW TO REPLACE THE CONDENSER FAN



1) Unscrew the roof cover (5 screws)



2) Remove the inner cover

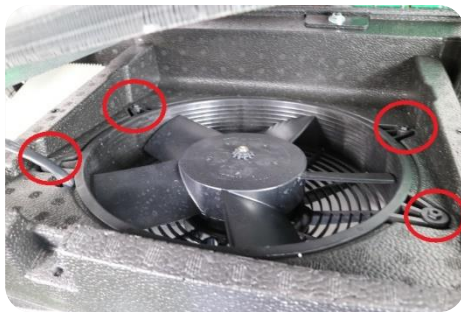


3) Disconnect the condenser fan connector from the bigger PCB

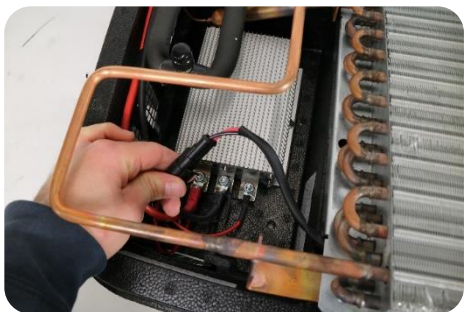


4) Unscrew the condenser (2 torx-screw)





5) Lift a bit the condenser and unscrew the condenser fan (4 torx-screw)



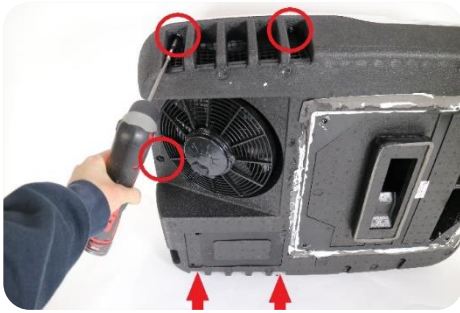
6) Disconnect the fan and remove it



7) Reverse the procedure to install a new condenser fan



# HOW TO REPLACE THE CONVERTER



1) Unscrew the roof cover (5 screws)



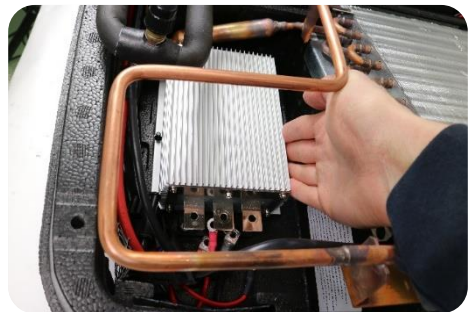
2) Remove the inner cover



3) Unscrew the 3 screw-nuts fixing the wires to converter



4) Unscrew the screw-nut on the left of the converter



5) Move the converter on the left



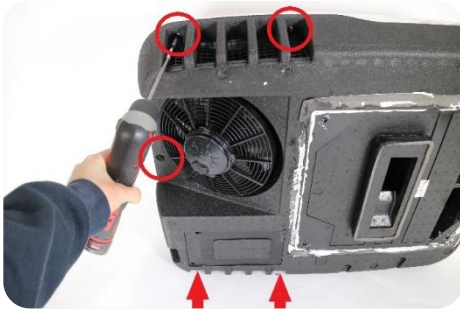
6) Unscrew the screw-nut on the right of the converter and remove it

# HOW TO CLEAN THE DUST FILTER



- 1) Unscrew the air scoop, remove the dust filter and clean it with compressed air

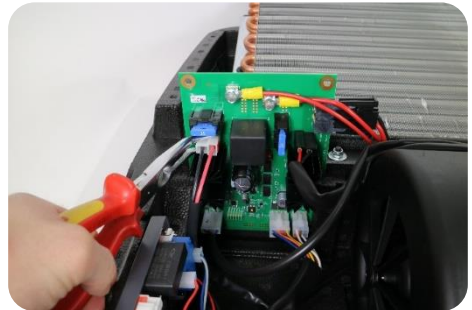
# HOW TO REPLACE THE EVAPORATOR FAN



1) Unscrew the roof cover (5 screws)



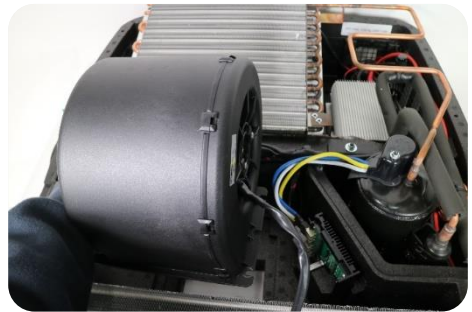
2) Remove the inner cover



3) Disconnect the evaporator fan connector from the bigger PCB



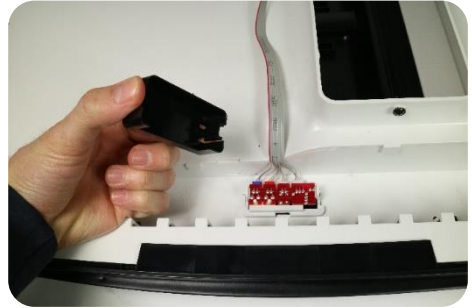
4) Unscrew the evaporator fan (2 screws-nut) and remove it



# HOW TO REPLACE THE INFRARED RECEIVER



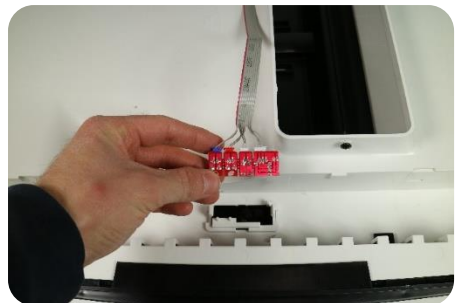
1) Remove the receiver protection



**WARNING!** Press carefully the protection lockings because it is very fragile and it may broke

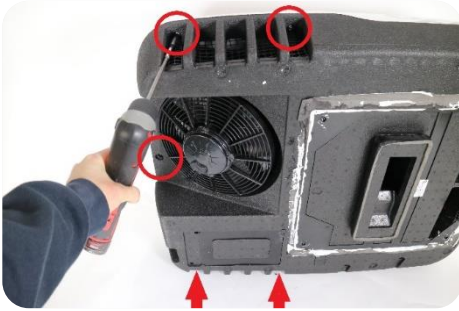


2) Push the locking and lift the receiver



3) Disconnect all the connector from the infrared receiver and replace it with a new one

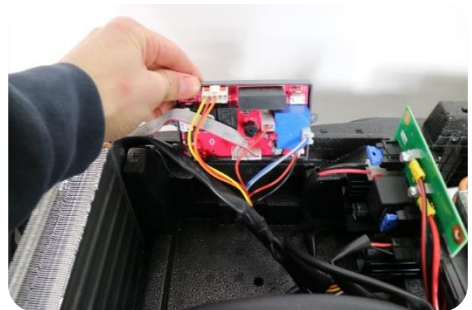
# HOW TO REPLACE THE MAIN PCB



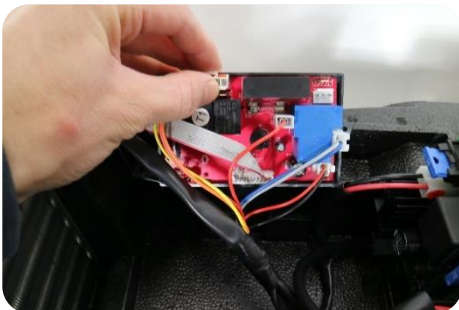
1) Unscrew the roof cover (5 screws)



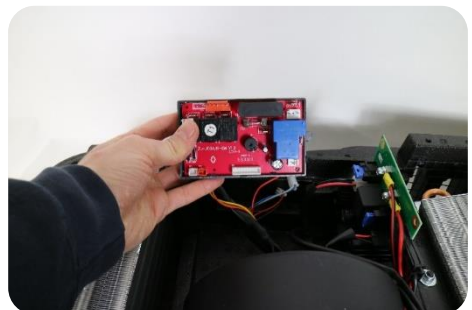
2) Remove the inner cover



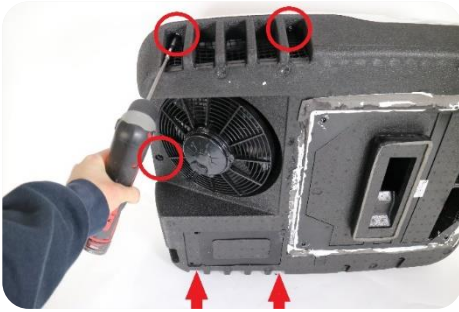
3) Slide out the main PCB



4) Disconnect all the connectors from the main PCB, remove the PCB and replace it with a new one



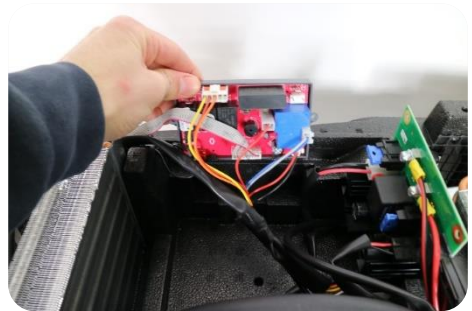
# HOW TO REPLACE THE EVAPORATOR TEMPERATURE SENSOR



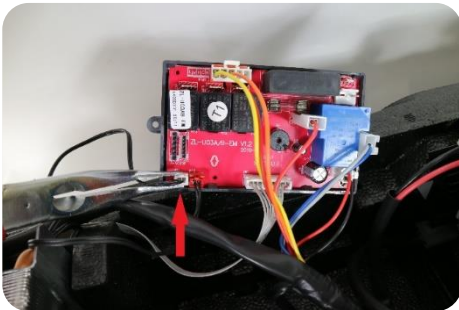
1) Unscrew the roof cover (5 screws)



2) Remove the inner cover



3) Slide out the main PCB



4) Disconnect the RT1 white connector from the main PCB and then remove the evaporator temperature sensor



**Indel B S.p.a.**

Via Sarsinate, 27

47866 - Sant'Agata Feltria (RN), Italia

T. 0541 848 711 - F. 0541 848 741

[info@indelb.com](mailto:info@indelb.com)

**For sales and service in USA:**

**Indel B North America**

100 Triport Circle

Georgetown, KY 40324

Ph 502.863.0373

[infoUS@indelB.com](mailto:infoUS@indelB.com)

[OFF.INDELB.COM](http://OFF.INDELB.COM)